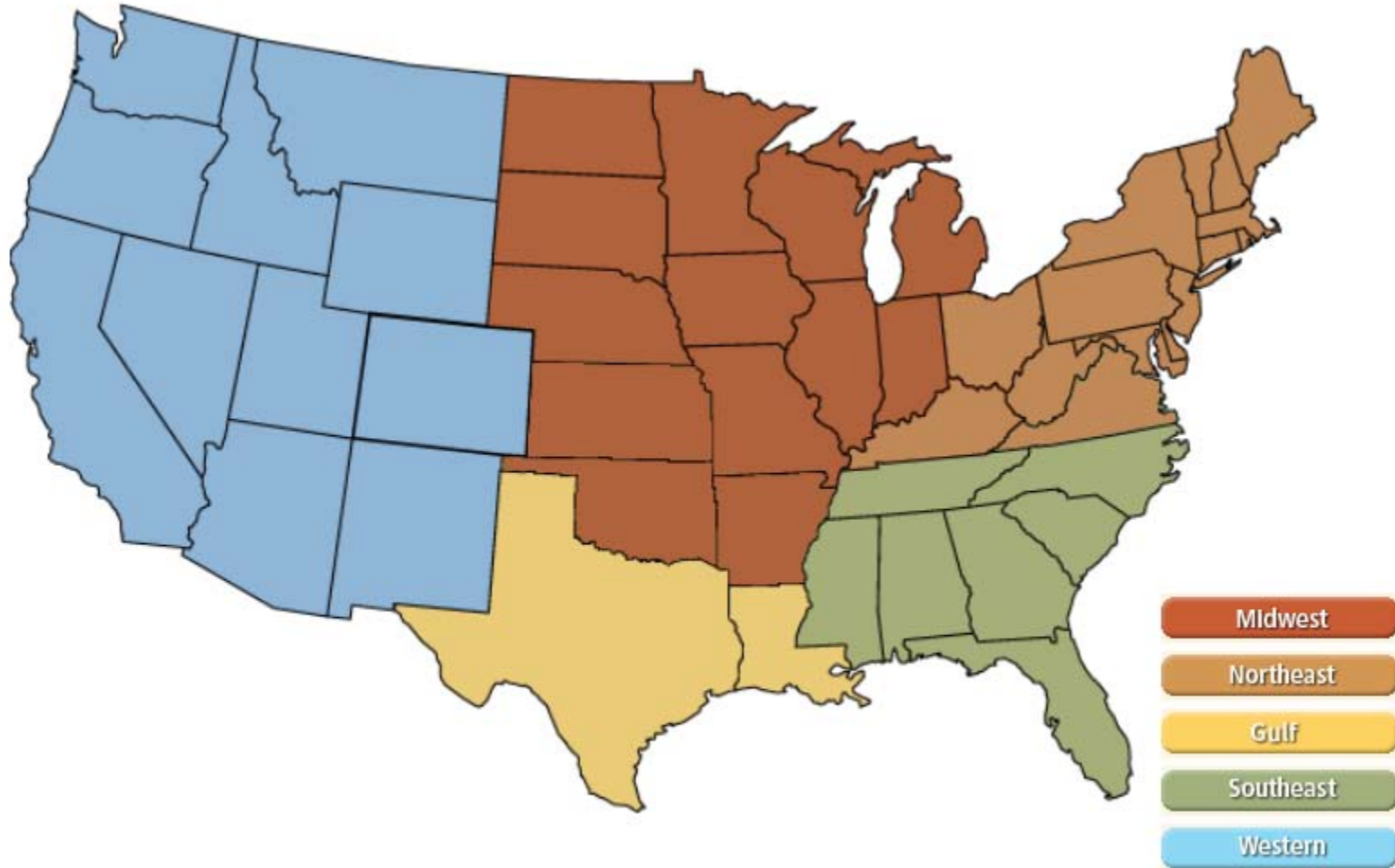
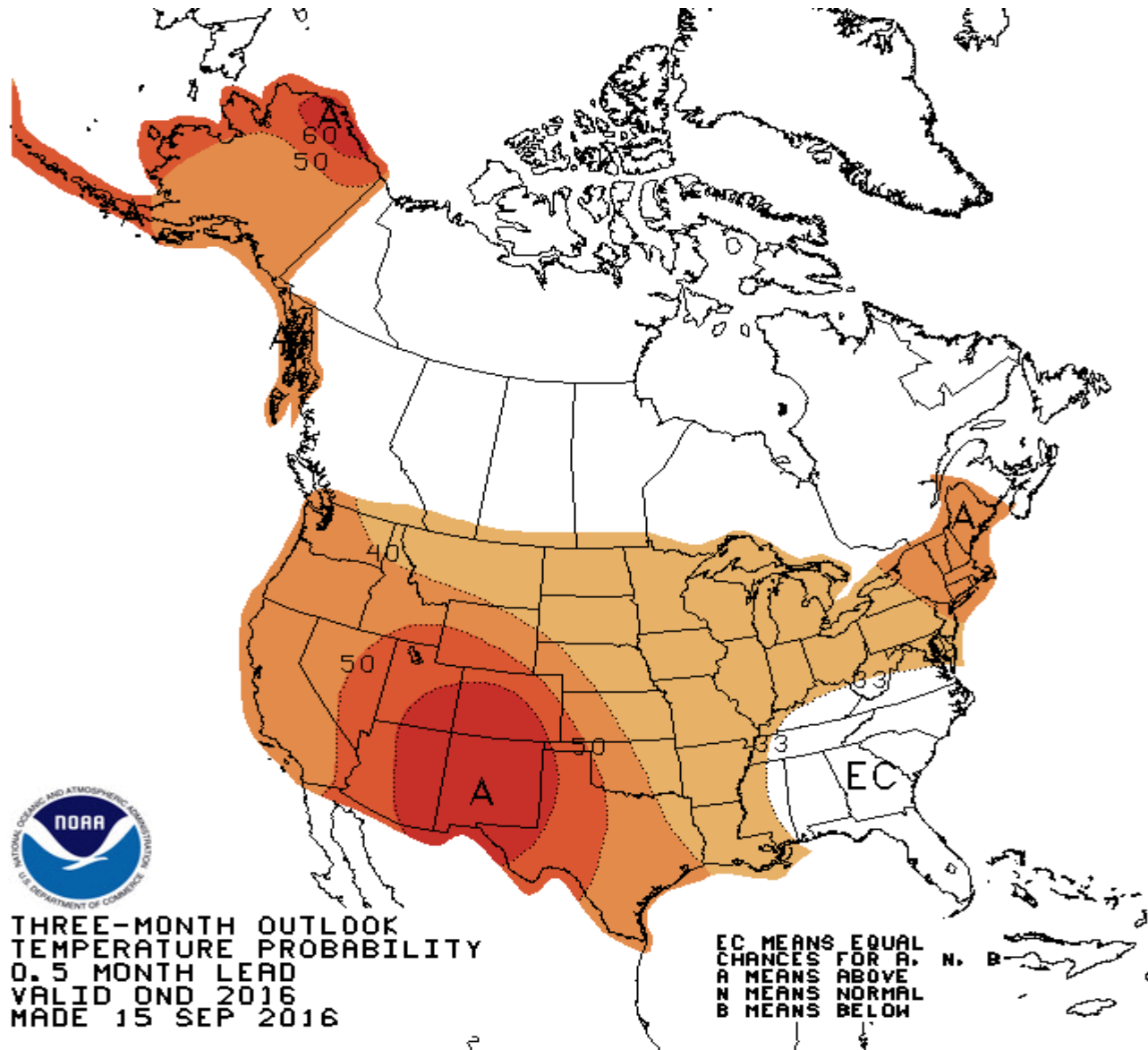


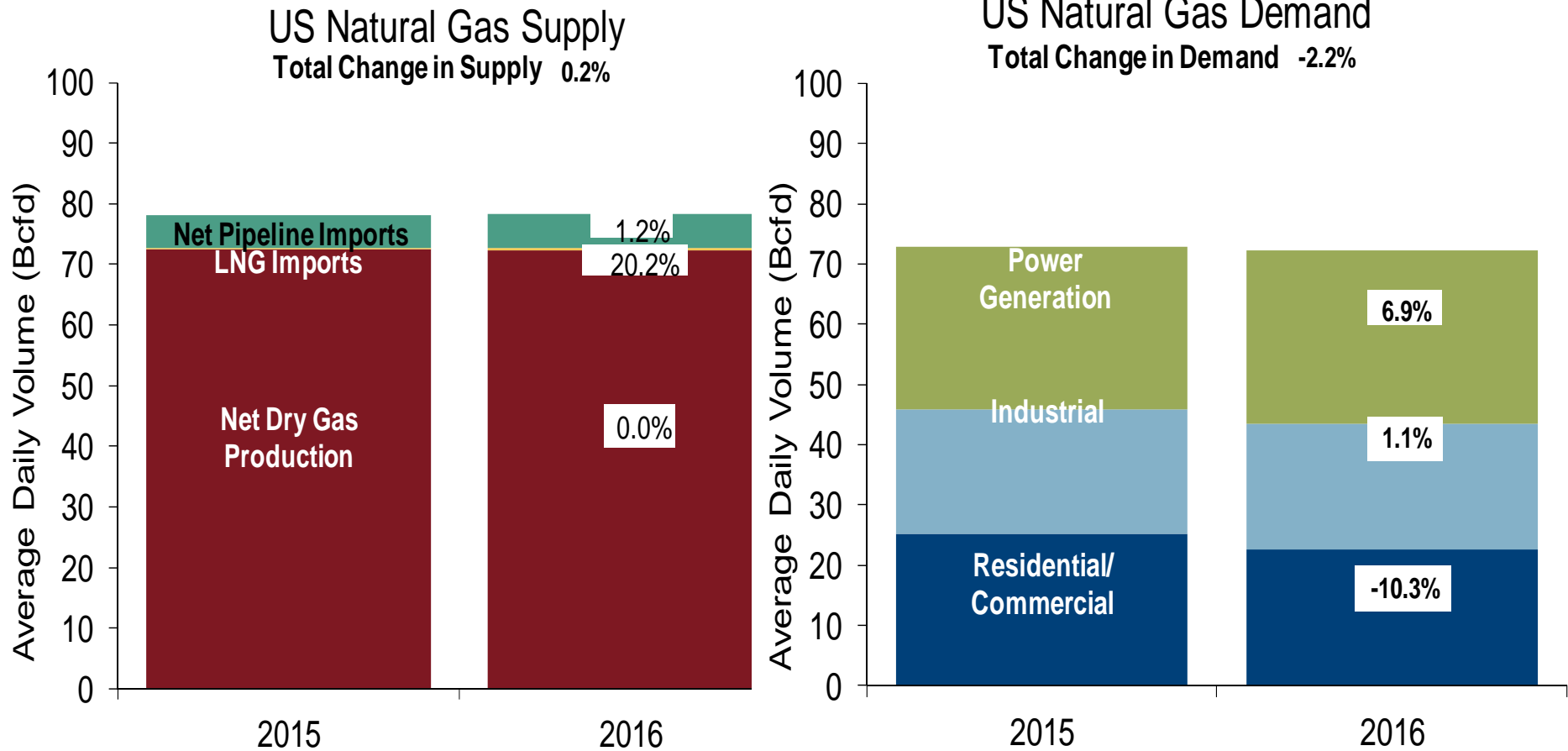
National



NOAA 3 Month Outlook

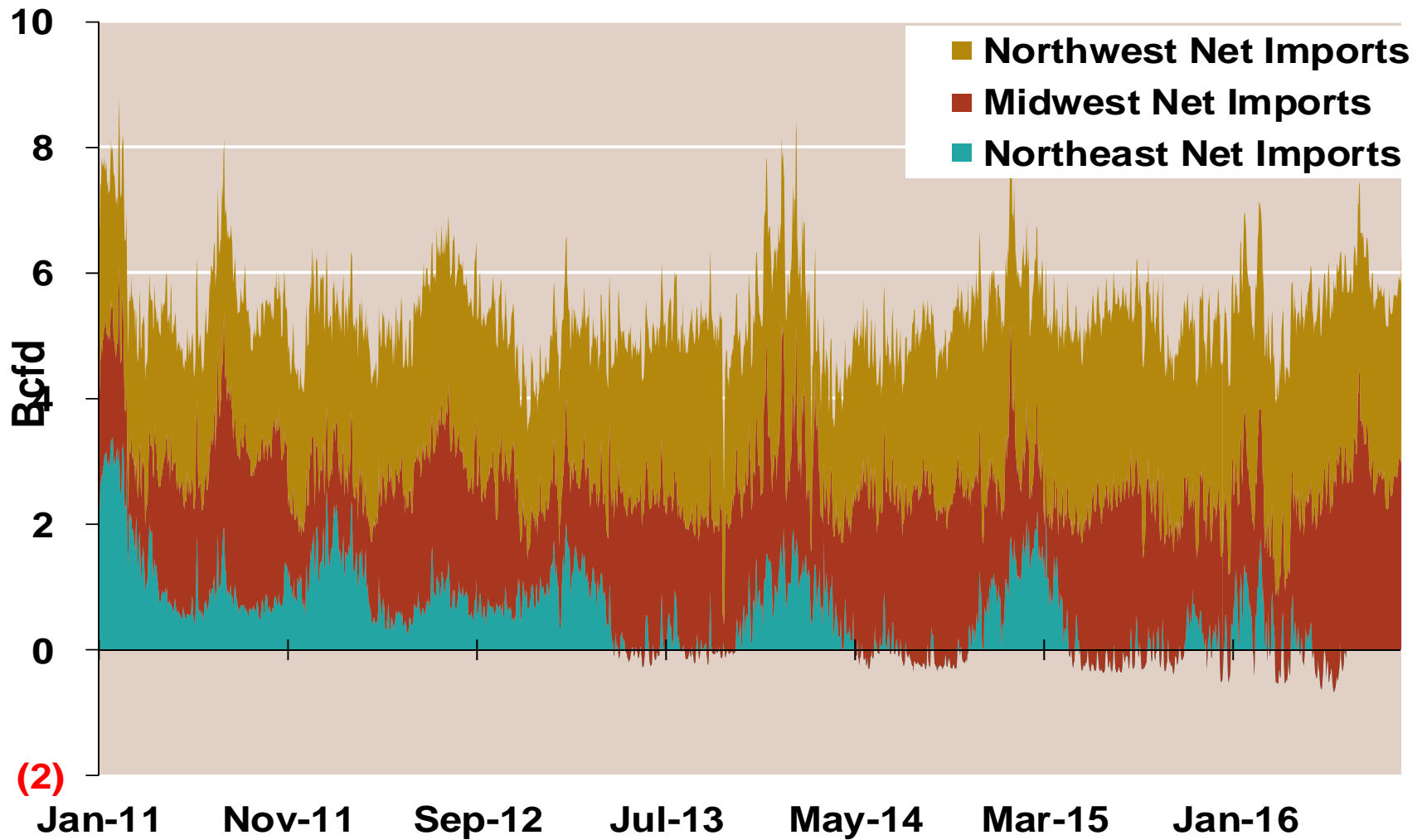


U.S. NG Supply and Demand Sep-15 YTD vs. Sep-16 YTD

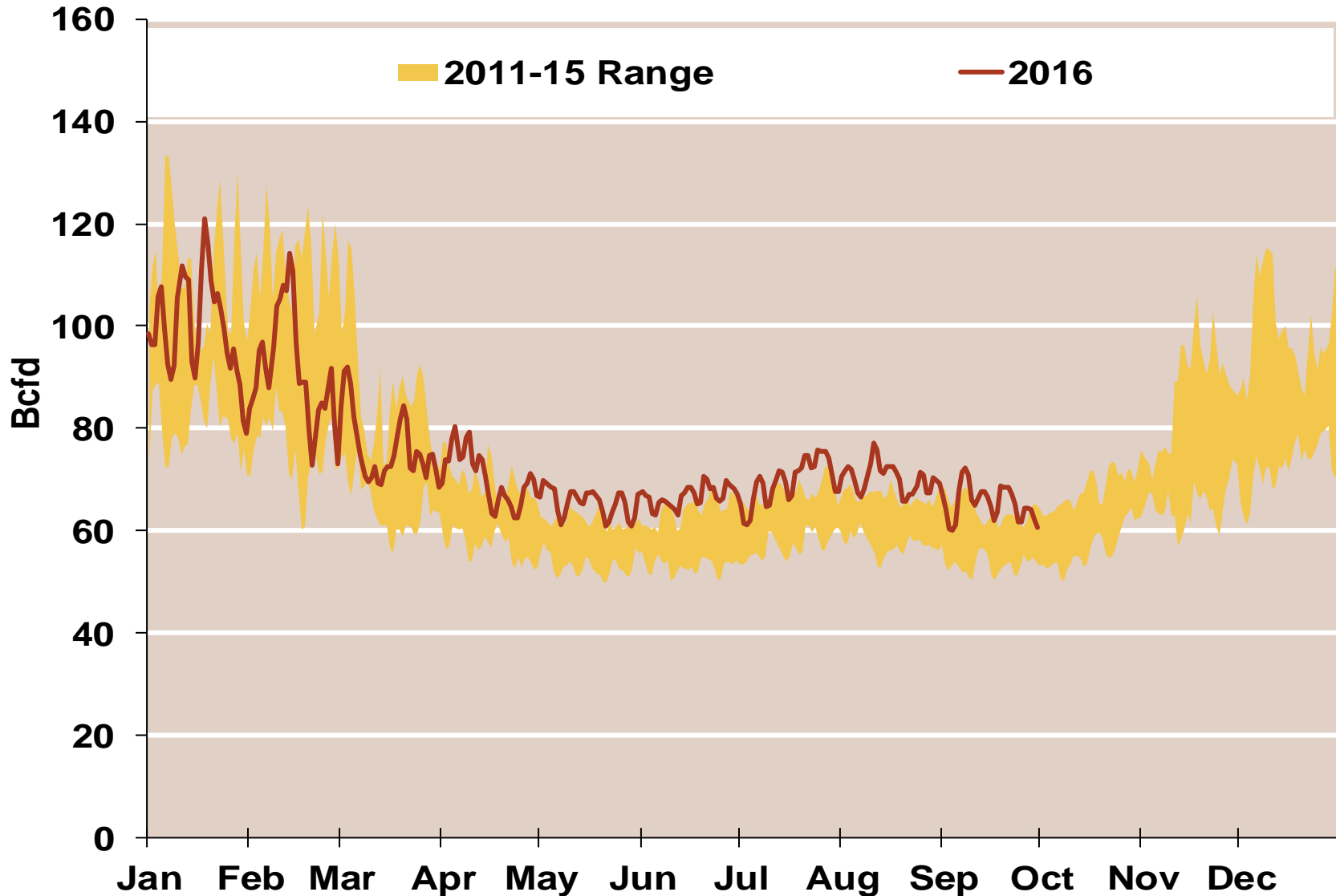


Note: Balance includes all amounts not attributable to other categories.
Source: Derived from *Bentek Energy* data

Regional Canadian Imports

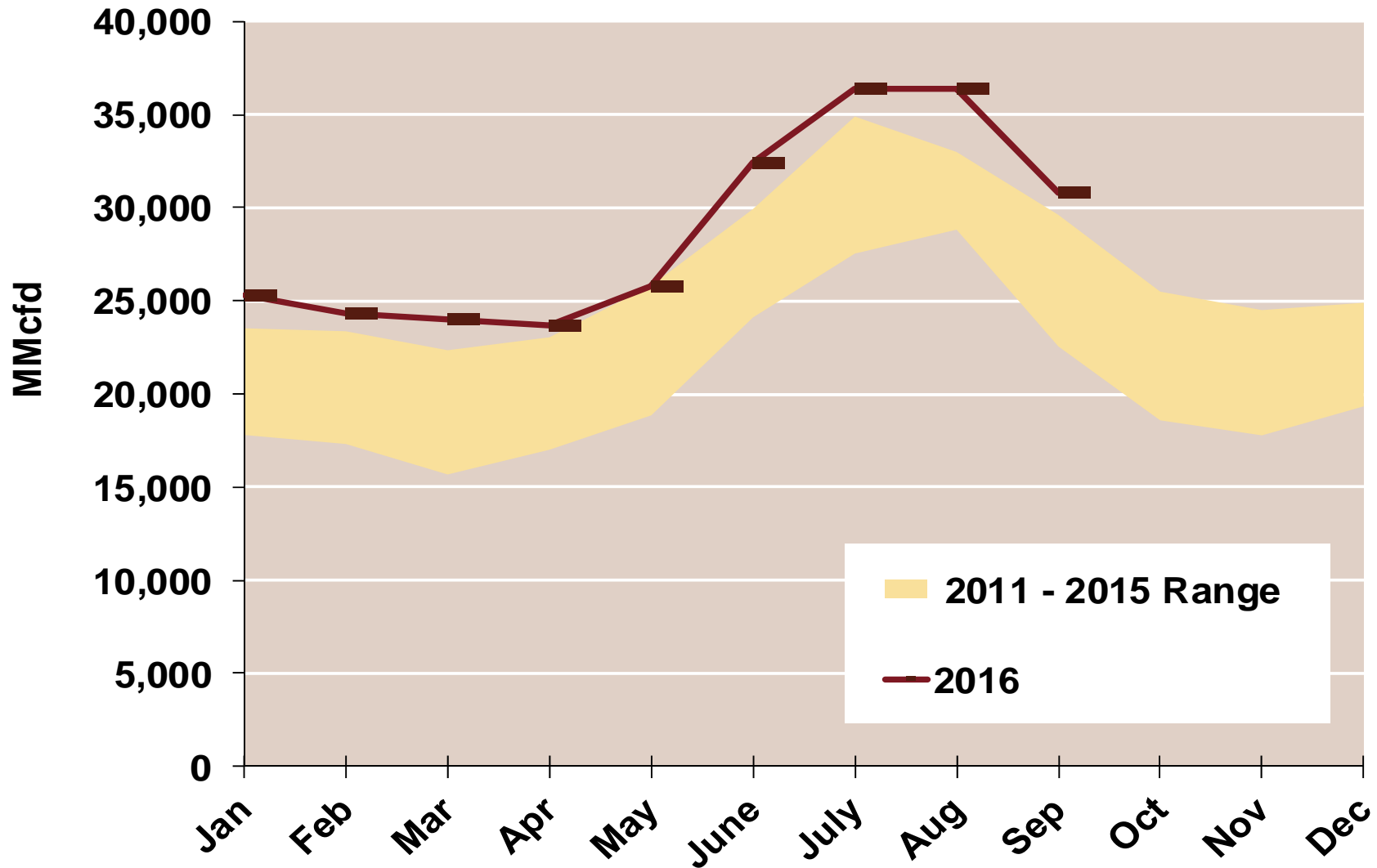


Total U.S. Natural Gas Demand All Sectors

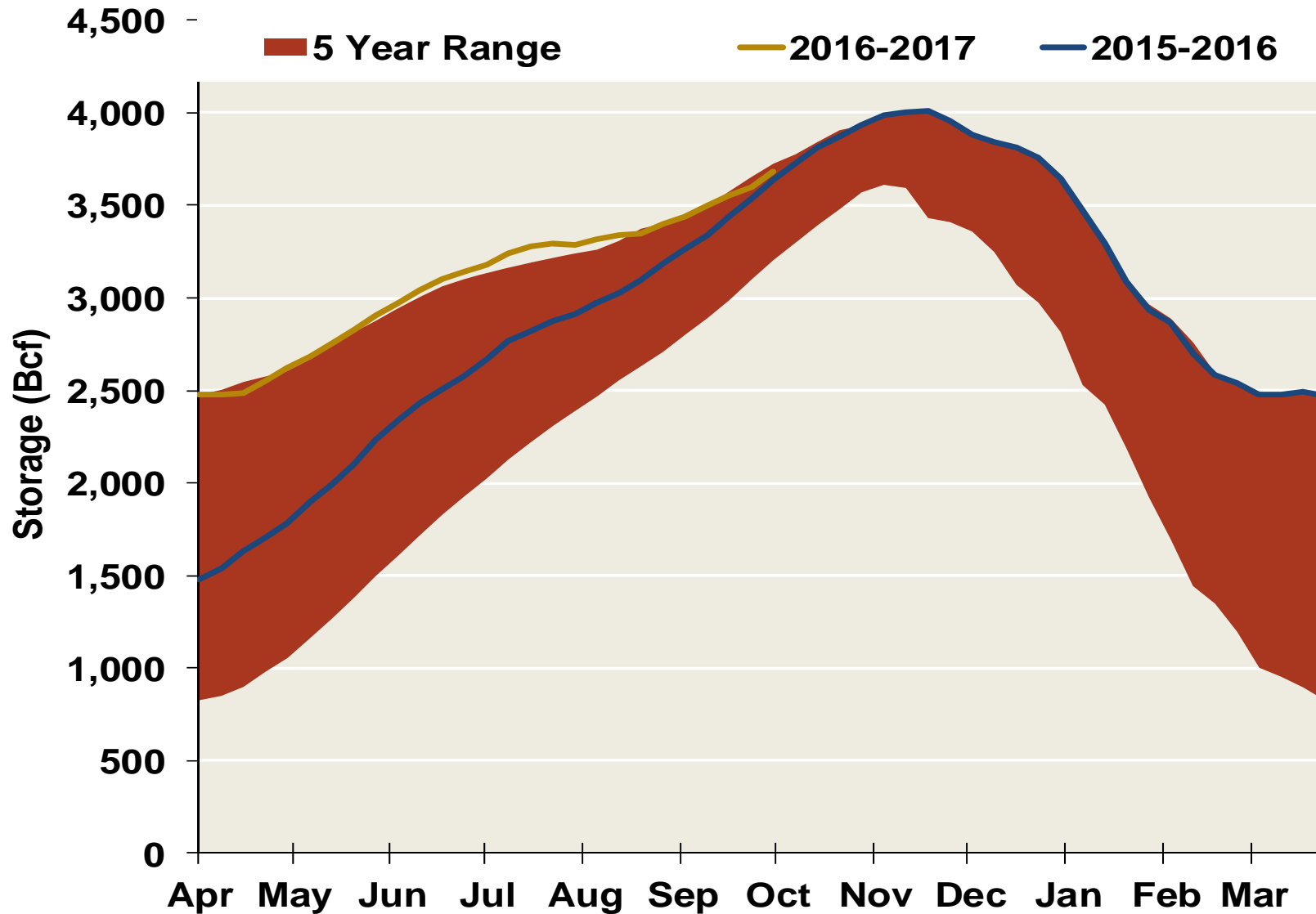


Source: Derived from *Bentek Energy* data, derived from interstate pipeline flow and modeled data.

U.S. Natural Gas Consumption for Power Generation



EIA Storage Inventories



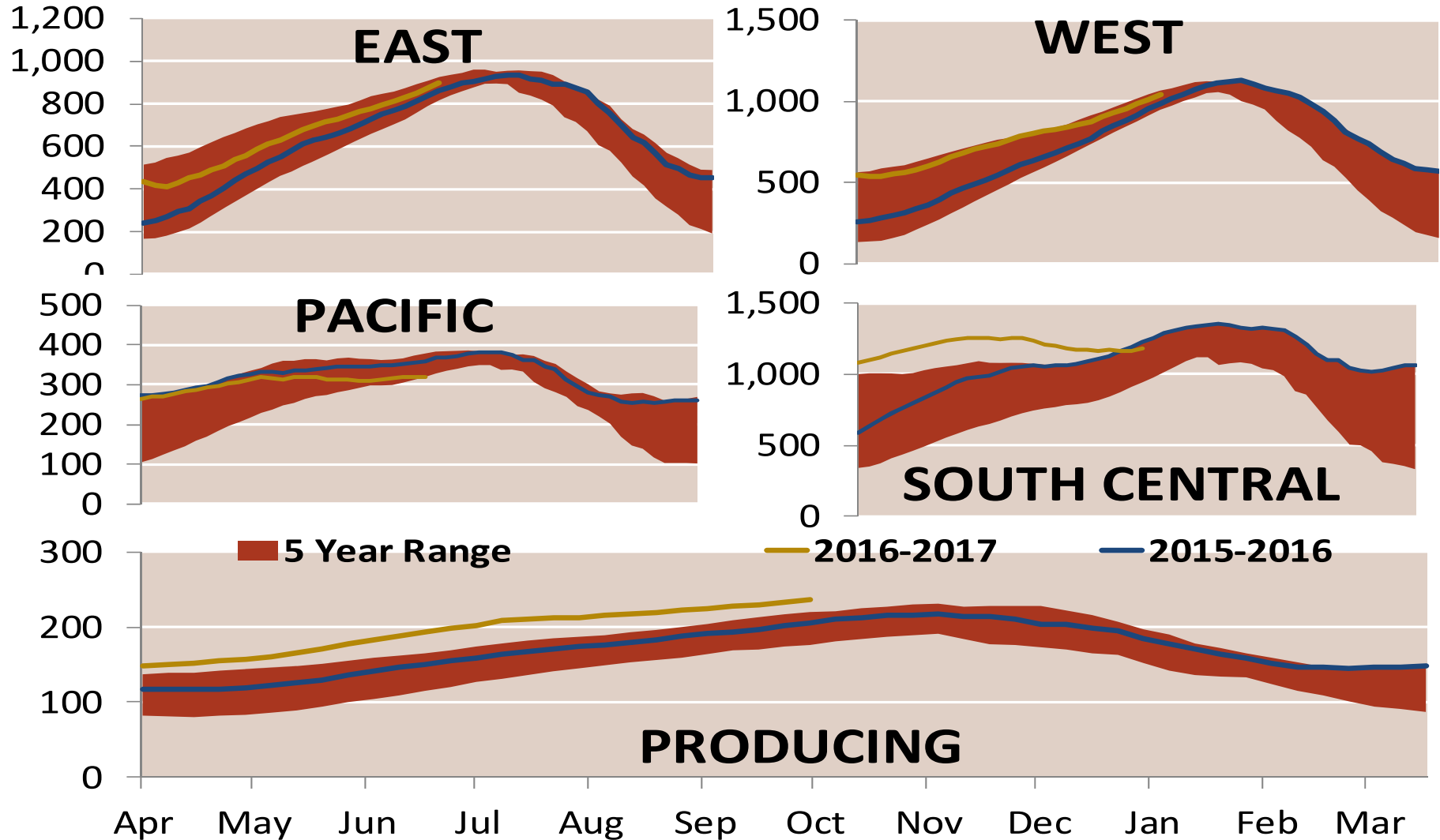
Notes:

Source: Derived from Bloomberg Data

Updated

Oct-16

EIA Storage Inventories



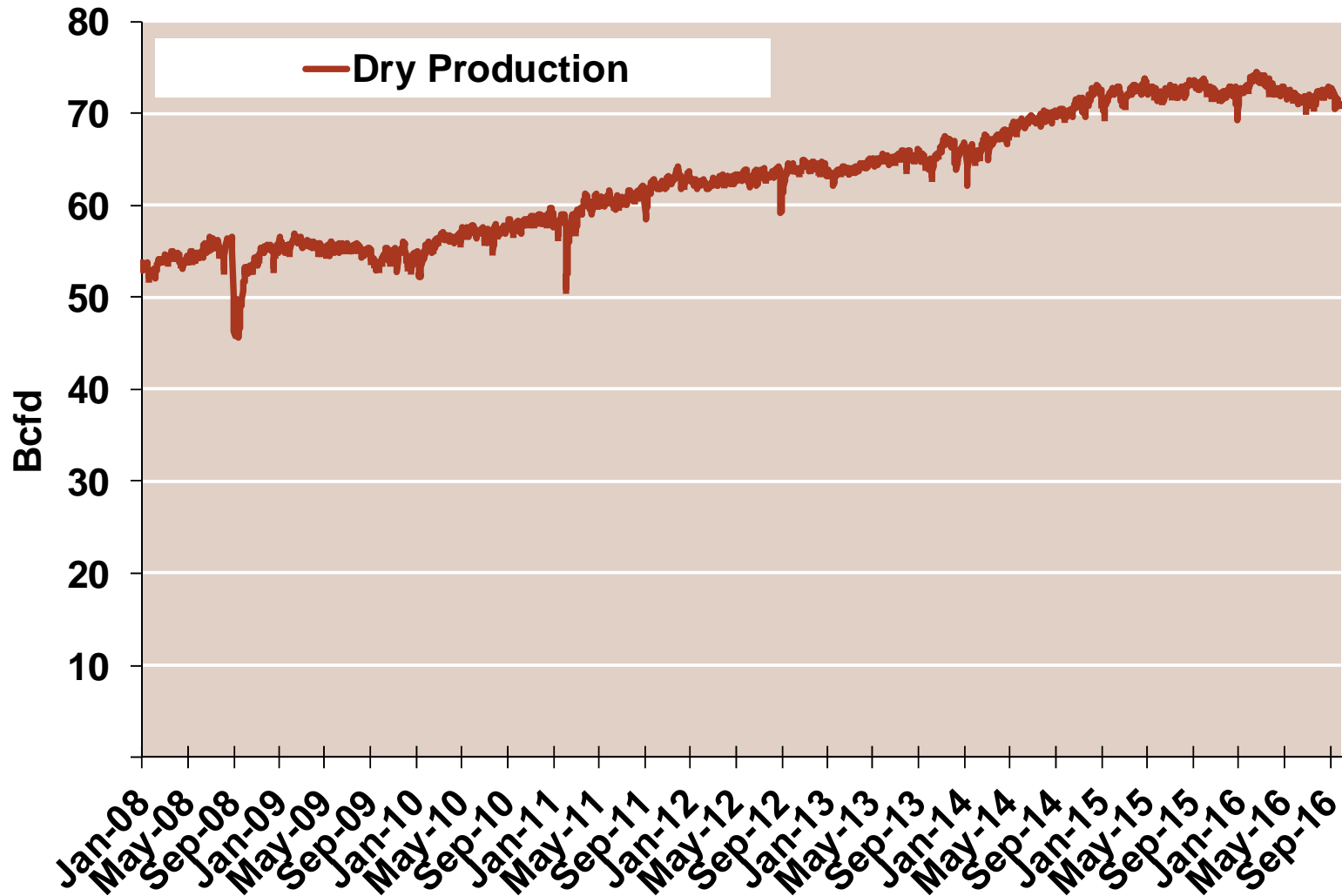
Notes:

Source: Derived from Bloomberg Data

Updated

Oct-16

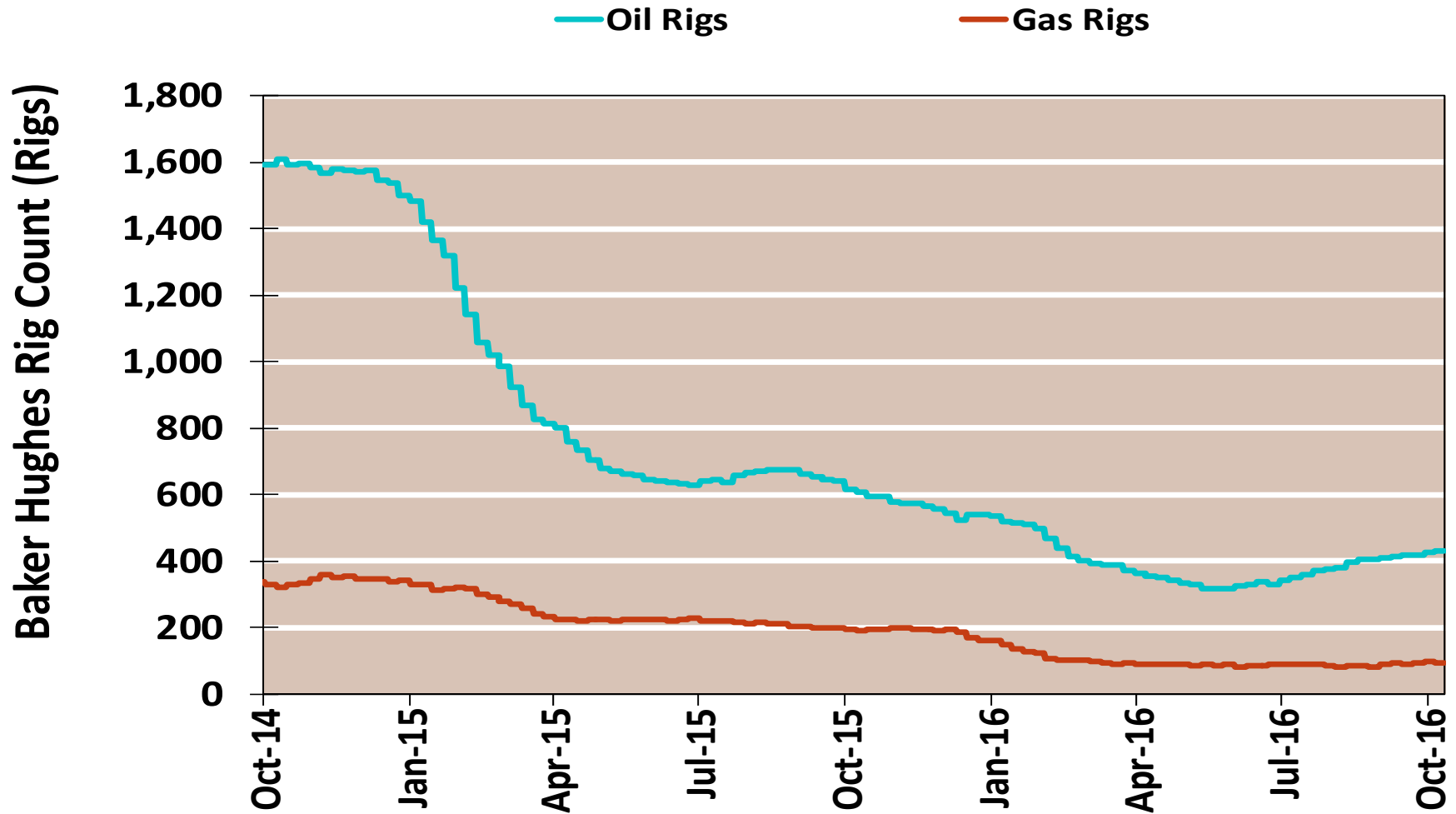
Monthly U.S. Dry Gas Production – Lower 48 States



Updated: Oct-16

Note: Prior to July 2010, chart was derived from a combination of EIA and Bentek Energy data
Source: Derived from Bentek Energy data

NG Rigs by Fuel Type



Notes:

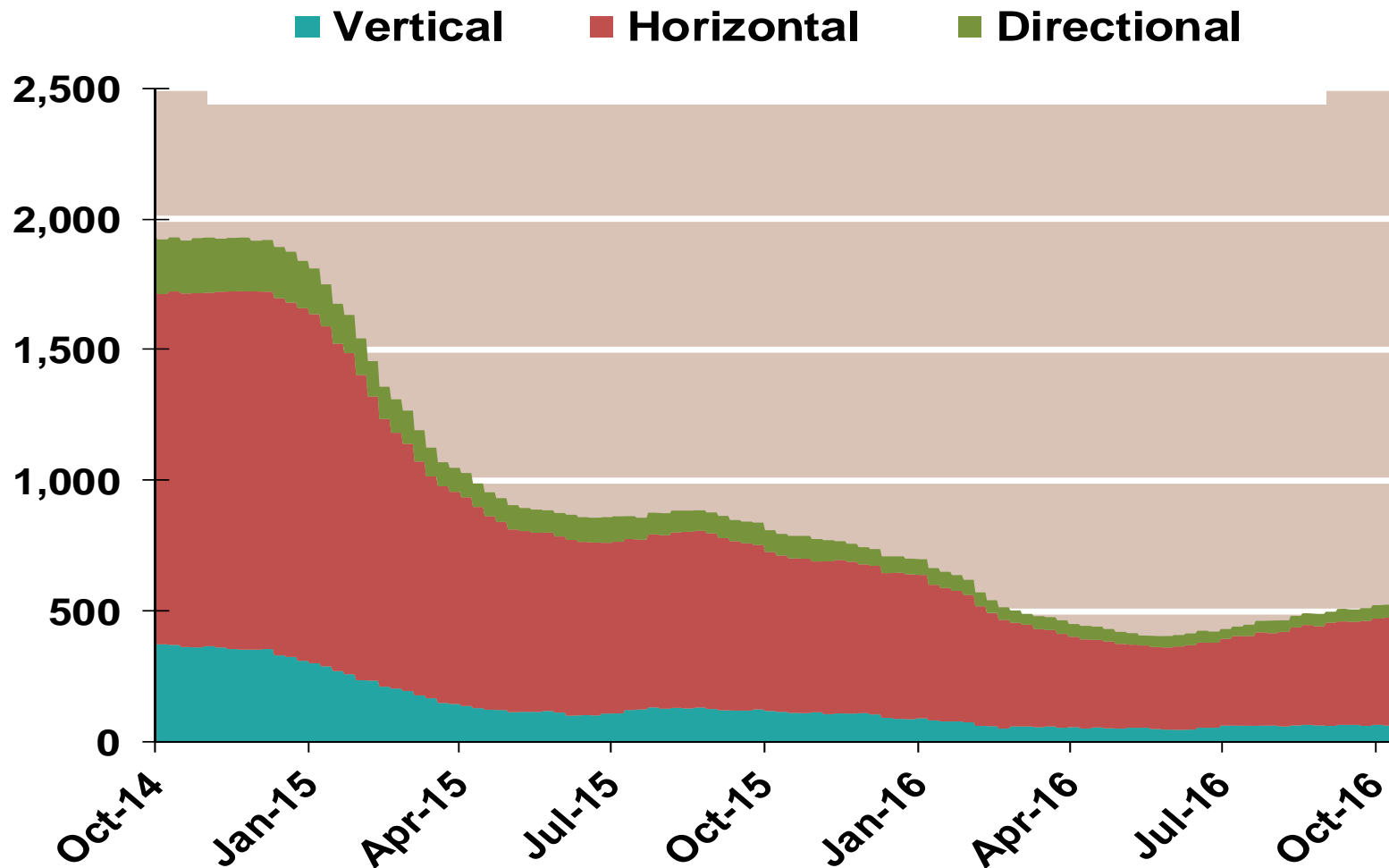
Source: Derived from Bloomberg data

Updated

Oct-16

NG Rig by Direction

Baker Hughes Rigs By Drill Type



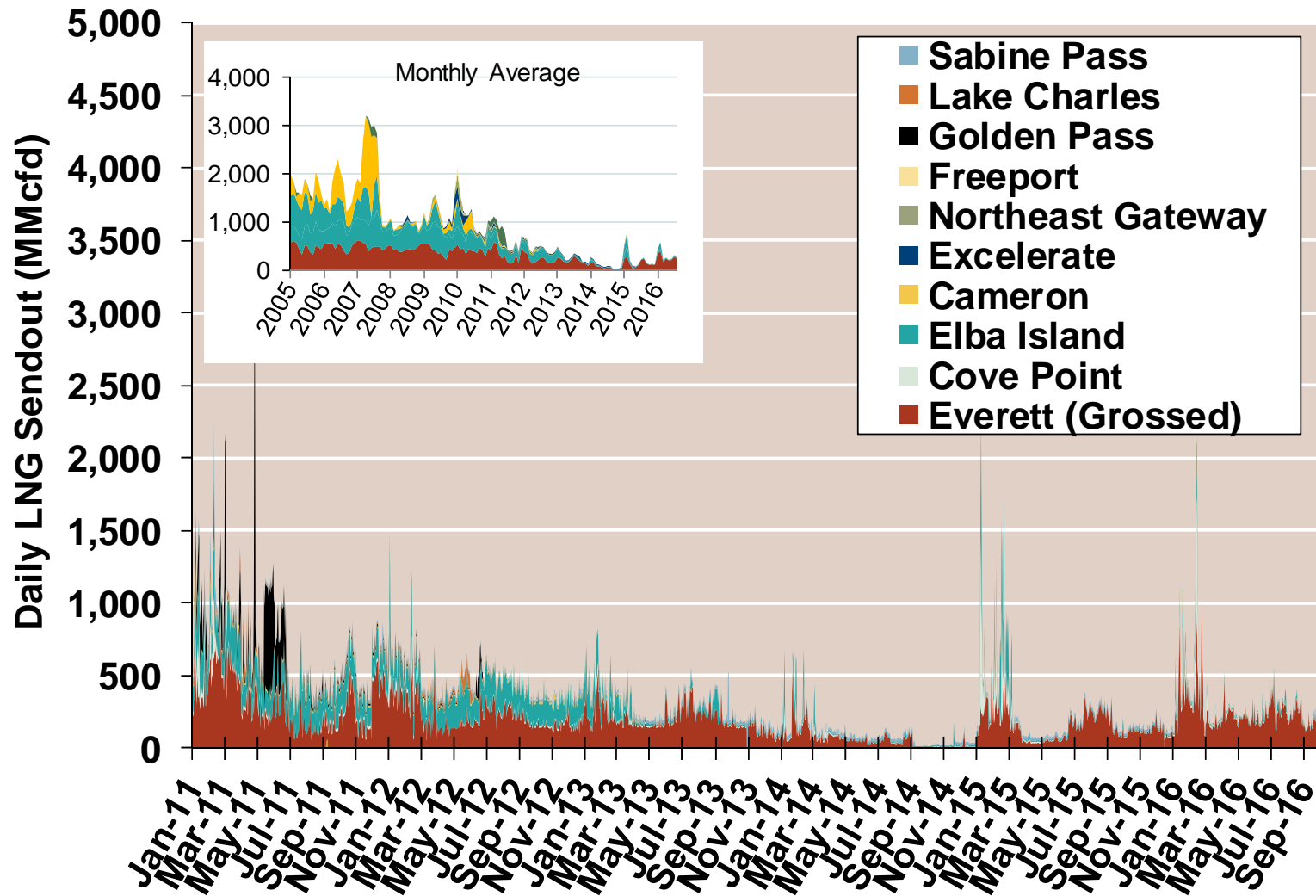
Notes:

Source: Derived from Bloomberg data

Updated

Oct-16

Daily Gas Sendout from Existing U.S. LNG Facilities



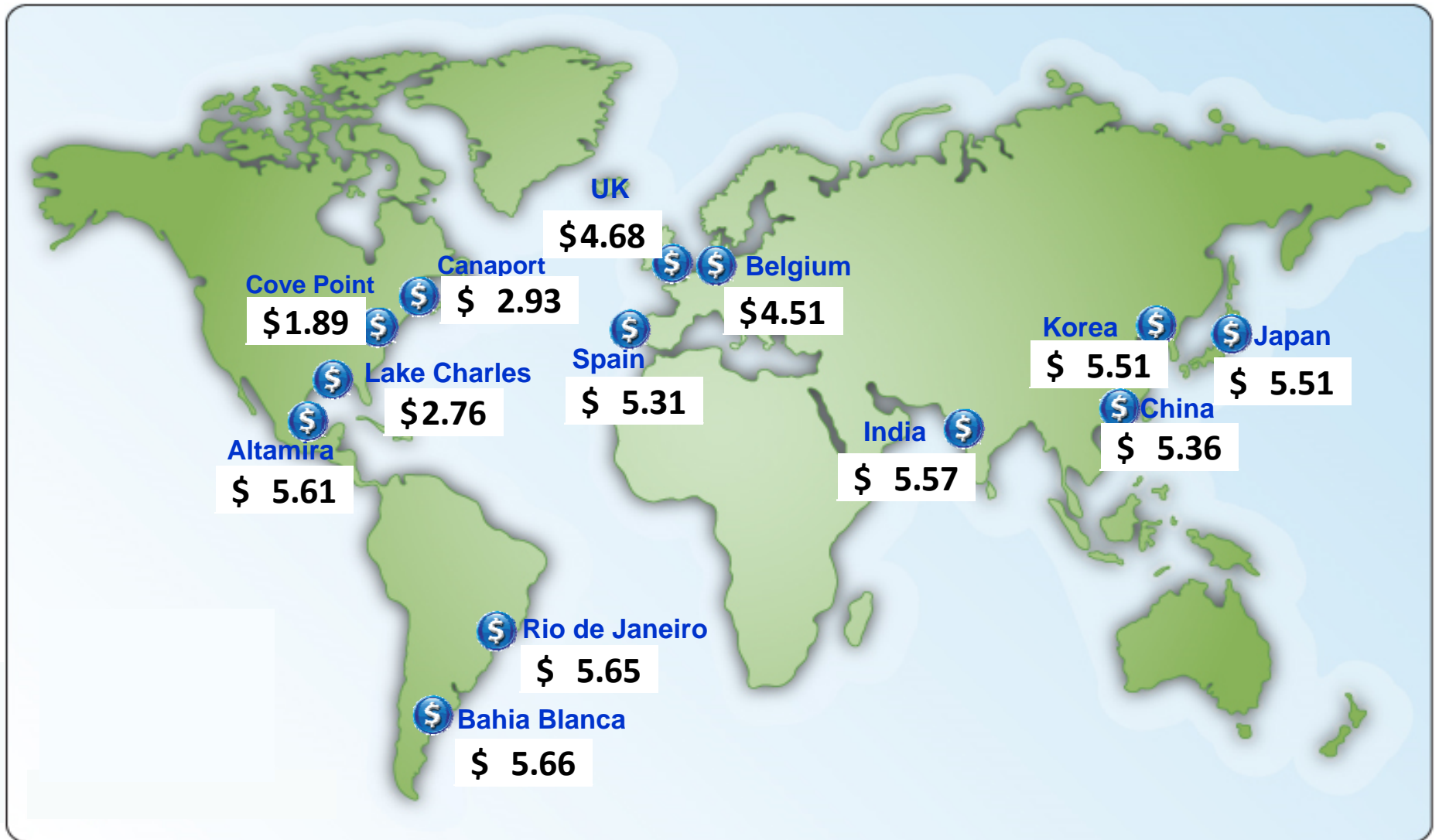
Notes: Everett data includes flows onto the AGT and TGP interstate lines, plus estimates of flows to the Mystic 7 power plant, Keyspan Boston Gas, and LNG trucked out of the terminal. Excludes flows to the Freeport LNG which flows via intrastate pipelines and flows to the Mystic 8 and 9 power plants.

Source: Derived from *Bentek Energy* data

Updated:

September 2016

World LNG Estimated Landed Prices: Sep-16



Source: Waterborne Energy, Inc. Data in \$US/MMBtu. Landed prices are based on a netback calculation.
Note: Includes information and Data supplied by IHS Global Inc. and its affiliates ("IHS"); Copyright (publication year) all rights reserved.
Prices are the monthly average of the weekly landed prices for the listed month.